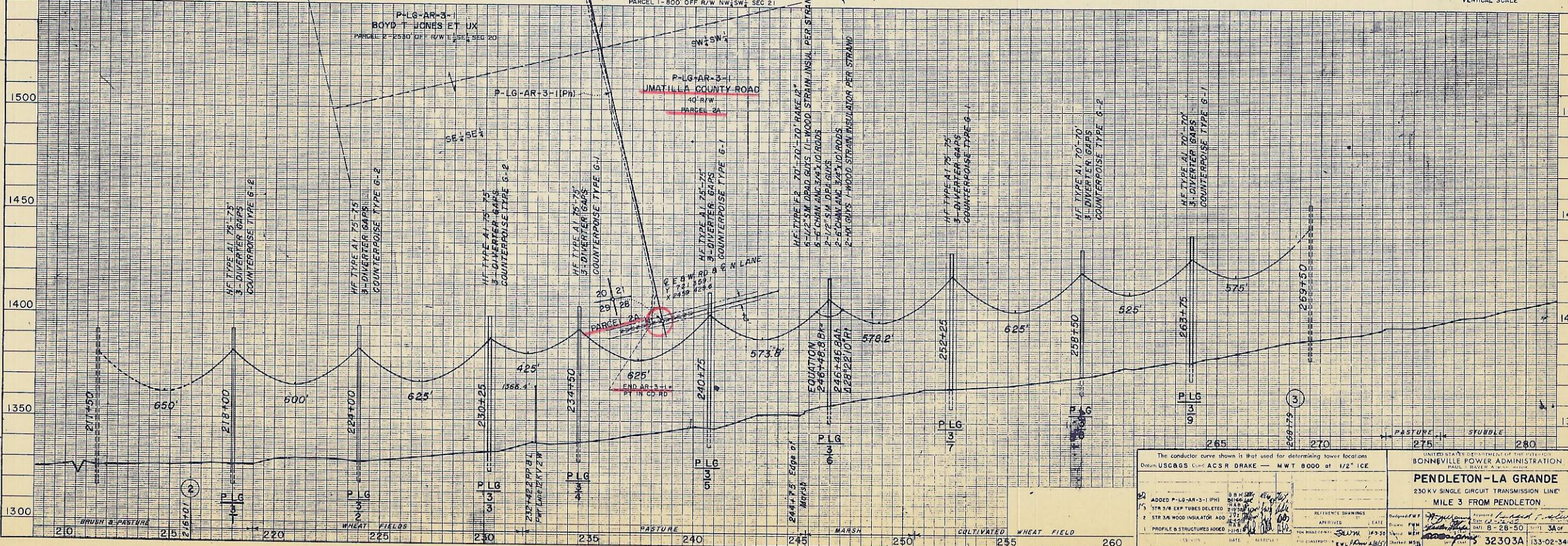
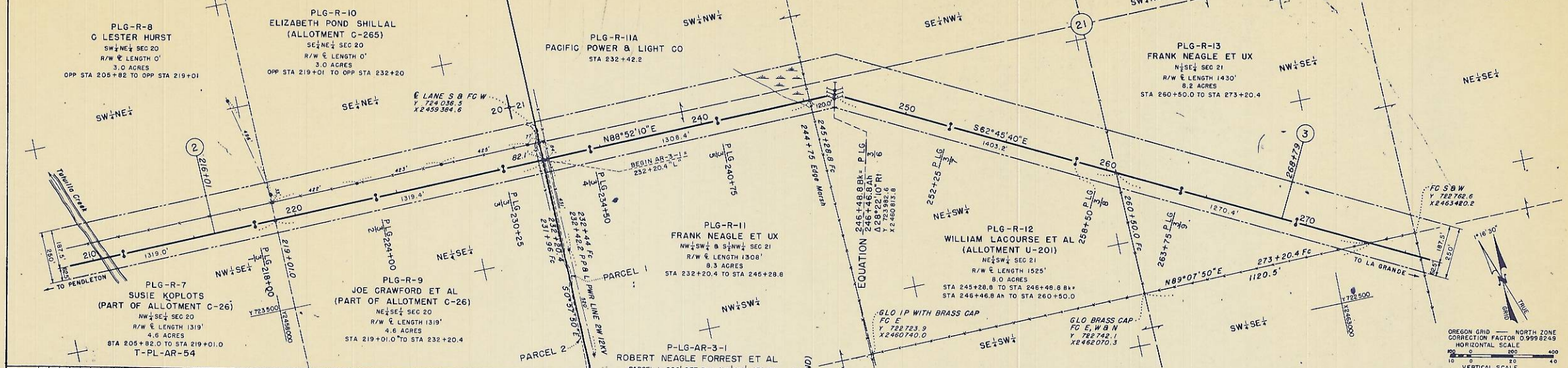


UMATILLA INDIAN RESERVATION

SECS 20 & 21 T2N R33E WM  
UMATILLA COUNTY, OREGON



OREGON GRID — NORTH ZONE  
CORRECTION FACTOR 0.9998249  
HORIZONTAL SCALE  
VERTICAL SCALE

The conductor curve shown is that used for determining tower locations  
Datum: USCGS Cont. ACSR DRAKE — MWT 8000 at 1/2" ICE

UNITED STATES DEPARTMENT OF THE INTERIOR  
BONNEVILLE POWER ADMINISTRATION  
PAUL WEAVER, Administrator

**PENDELTON-LA GRANDE**  
230 KV SINGLE CIRCUIT TRANSMISSION LINE  
MILE 3 FROM PENDELTON

ADDED P-LG-AR-3-1 (PH) STA 246+48.8 FT  
2 STR 3/4 EXP TUBES DELETED  
1 STR 3/4 WOOD INSULATOR ADD  
1 PROFILE B STRUCTURES ADDED  
DATE: 12/15/70  
APPROVED: [Signature]

DESIGNED BY: [Signature]  
CHECKED BY: [Signature]  
DATE: 12/28/70  
SCALE: 3/4" = 1'-0"

32303A 133-02-340-D1

22