

OREGON CORNER RESTORATION FORM

SECTION 7,12,13,18 TOWNSHIP 4 NORTH RANGE 29,30 EAST J-25

COUNTY : UMATILLA DATE MAY/20

CORNER DESIGNATION

CONDITION REPORT ONLY

SECTION CORNER

NOT FOUND

RENEWED

UNCOVERED

SURVEYED IN

REFERENCED

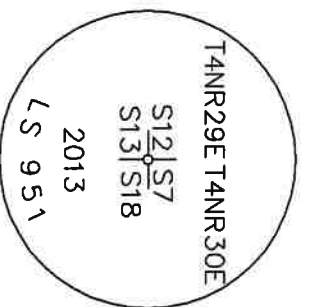
PREVIOUS RENEWALS / SURVEYS, ETC.

ORIGINALLY SURVEYED IN 1860 BY CAMPBELL UNDER CONTRACT #95. HE SET A CHARRED STAKE WITH RAISED MOUND OF EARTH AND PITS. EDWARDS SET A 2 3/8" BC IN 2013.

MONUMENTS AND ACCESSORIES FOUND: CONDITION AND SOURCE

- A 5/8" IRON ROD WITH A PLASTIC CAP "#951" LIES S 66°56'26" W, 44.41 FEET.
- A 5/8" IRON ROD WITH A PLASTIC CAP "#951" LIES S 73°28'29" E, 57.65 FEET.
- A 5/8" IRON ROD WITH A PLASTIC CAP "#951" LIES N 31°23'03" E, 111.23 FEET.
- A 2 3/8" BC STAMPED AS BELOW.

MONUMENT DETAIL

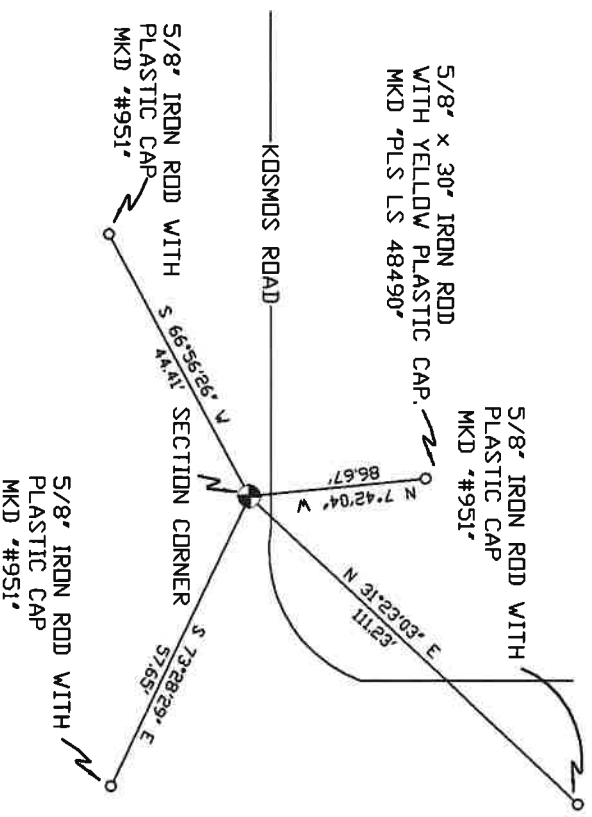


NAD 83/91
OREGON STATE PLANE
INTERNATIONAL FEET

793641.81
8553300.07

MONUMENT SET (PROCEDURES AND DESCRIPTION)

SKETCH



NEW ACCESSORIES FROM WHICH

A 5/8" x 30" IRON ROD WITH A YELLOW PLASTIC CAP MKD "PLS LS 48490" LIES N 7°42'04" W, 86.67 FEET.

LOCATION AND COMMENTS

FROM INTERSECTION OF LOOP RD. AND KOSMOS RD. GO EAST ON KOSMOS RD. 1.5 MILES TO CORNER.

COMPASS DEC.

SURVEYOR'S SEAL

FIRM/AGENCY
PRIMM LAND SURVEYING
P.O. BOX 1322
HERMISTON, OREGON 97838

REGISTERED
PROFESSIONAL
LAND SURVEYOR

PARTY CHIEF
PAUL P. PILCH

NOTES

OREGON
JULY 12, 2005
KEITH P. PRIMM
48490

WITNESS
KETH P. PRIMM

EXPIRATION DATE: 12/31/20

21-004-c

Φ1 DEC 20