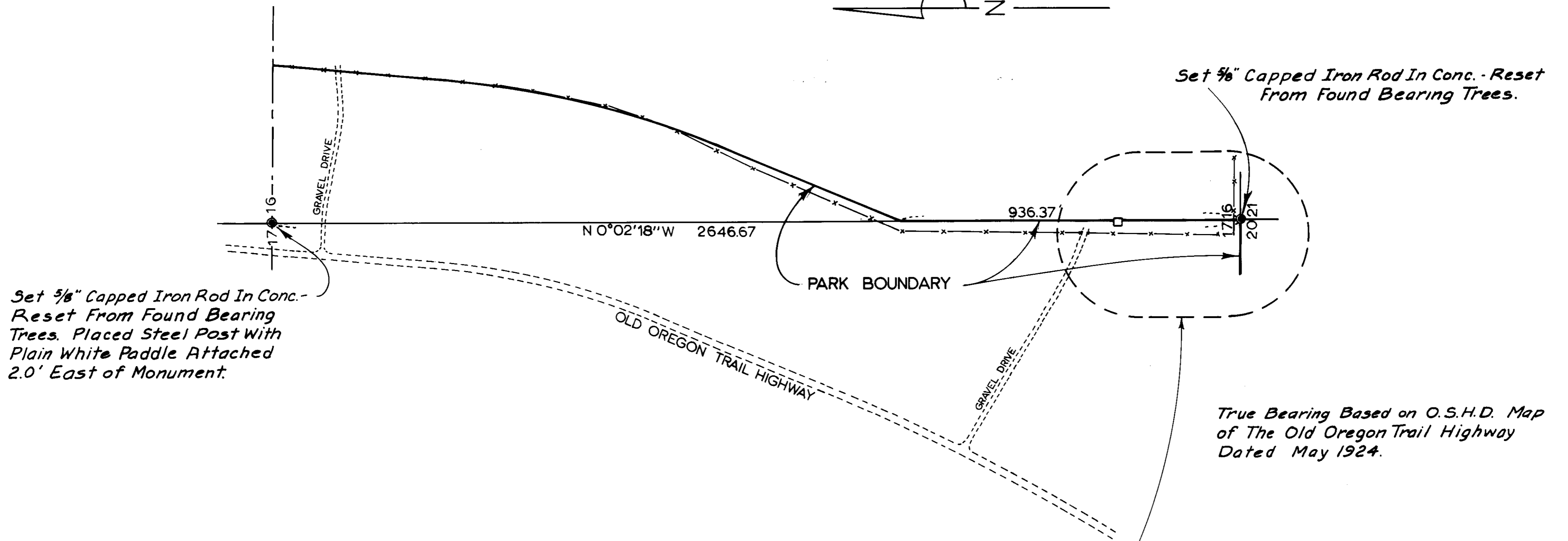
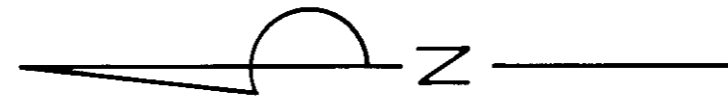


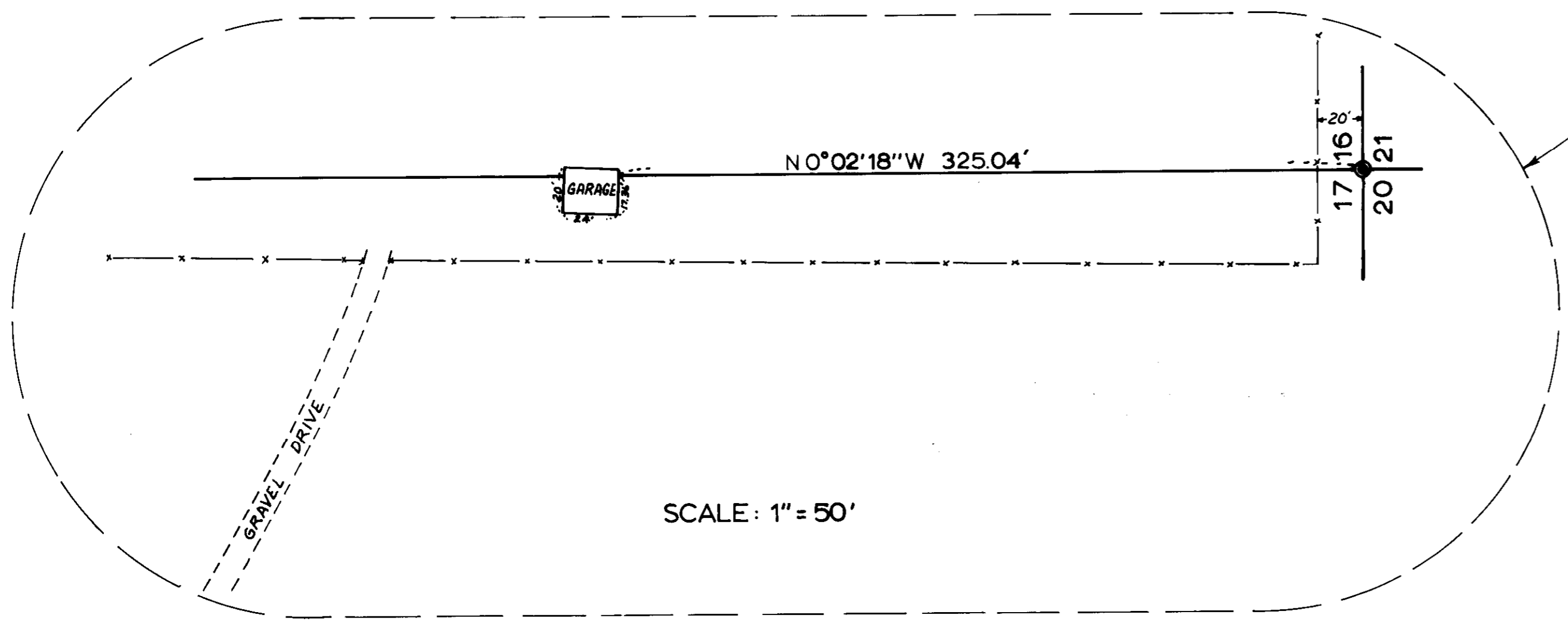
T.1 N., R.35 E.W.M.



REGISTERED
PROFESSIONAL
LAND SURVEYOR

John E. Hollingsworth

OREGON
JULY 6, 1989
JOHN E. HOLLINGSWORTH
691



OREGON STATE PARKS & RECREATION DIVISION
DEPARTMENT OF TRANSPORTATION
BLUE MOUNTAIN FOREST WAYSIDE
BOUNDARY SURVEY
SE 1/4 SECTION 17 & SW 1/4 SECTION 16, T.1 N., R.35 E.W.M.
UMATILLA COUNTY
SCALE: 1" = 200' AUGUST 1, 1980

RECEIVED BY
Umatilla County Surveyor
Date 9-18-80
Rec'd by BLS
No. R-160-B

OREGON STATE PARKS AND RECREATION DIVISION

BLUE MOUNTAIN FOREST WAYSIDE
Sections 16 and 17, T1N, R35E, W.M.
Umatilla County
August 1, 1980

SURVEY NARRATIVE

This survey was made using a Mac 2H electronic distance measuring instrument and a Jena one-minute theodolite. The purpose of the survey was to establish a portion of the boundary of the Blue Mountain Forest Wayside. The bearing for this survey was taken from an old Oregon State Highway Department map of the old Oregon Trail Highway, dated May 1924.

The section corner, quarter corner, gravel drive, and old Oregon Trail Highway were tied with a random traverse which was closed and balanced.

A portion of a garage and a fence were found to be on the Parks side of the section line in Section 17. This information is shown on the plat accompanying this narrative.

CORNER INFORMATION

Section Corner Section 16, 17, 20 & 21

(Var 20½°E)

Original: Basalt stone 12x10x8, 8 inches in the ground marked three notches on the south and four notches on the east edges, from which:

10-inch Pine, N53°E, 38 lks., scribed T1N S16 BT
12-inch Pine, S25°E, 15 lks., scribed R35E S21 BT
6-inch Pine, S52°W, 86 lks., scribed T1N S20 BT
10-inch Pine, N53°W, 38 lks., scribed R35E S17 BT

Found: Basalt stone is missing,
28-inch Ponderosa Pine N52°E "S16" visible on face of blaze.
29-inch Ponderosa Pine S51°W, no scribe visible on blaze.

Restored: At the intersection of original distances from the above bearing trees, we set a 5/8-inch iron rod with an aluminum cap marked Oregon State Parks. This rod is set in concrete in the south wheel track of an old dirt road,
12-inch Ponderosa Pine N50°W, 36.0 feet to center, scribed T1N R35E S17 BT.
21-inch Ponderosa Pine S15°E, 45.8 feet to center, scribed T1N R35E S21 BT RS691.
Placed Park corner tag on 21-inch Ponderosa Pine BT.

Quarter Corner Sections 16 and 17

Original: 3"x3"x36" post set 25 inches in the ground, from which:

24-inch Pine, N62½°W, 45 lks., scribed ¼SBT.
36-inch Fir, N52°E, 45 lks., scribed ¼SBT.

Found: 38-inch rotted fir stump, N25°E (bearing possibly transposed) "BT" visible.
35-inch Pine, N61°W, "BT" visible (old corner tag on west side of Pine indicating quarter corner BT).

Restored: Set 5/8-inch iron rod with aluminum cap marked Oregon State Parks at the intersections of the original distances from the above bearing trees. The distances were pulled from the faces of the blazes, and the iron rod is set in concrete.
7-inch Fir, N46°E, 28.7 feet to center, scribed ¼S16 RS691 BT.
Set steel post and plain white paddle two feet east of corner monument.
Parks corner tag is placed on this BT.

Witnessed by:

R. Hemmer
L. Boge

John E. Hollingsworth
Engineering Supervisor
Oregon State Parks
525 Trade Street SE
Salem, OR 97310

