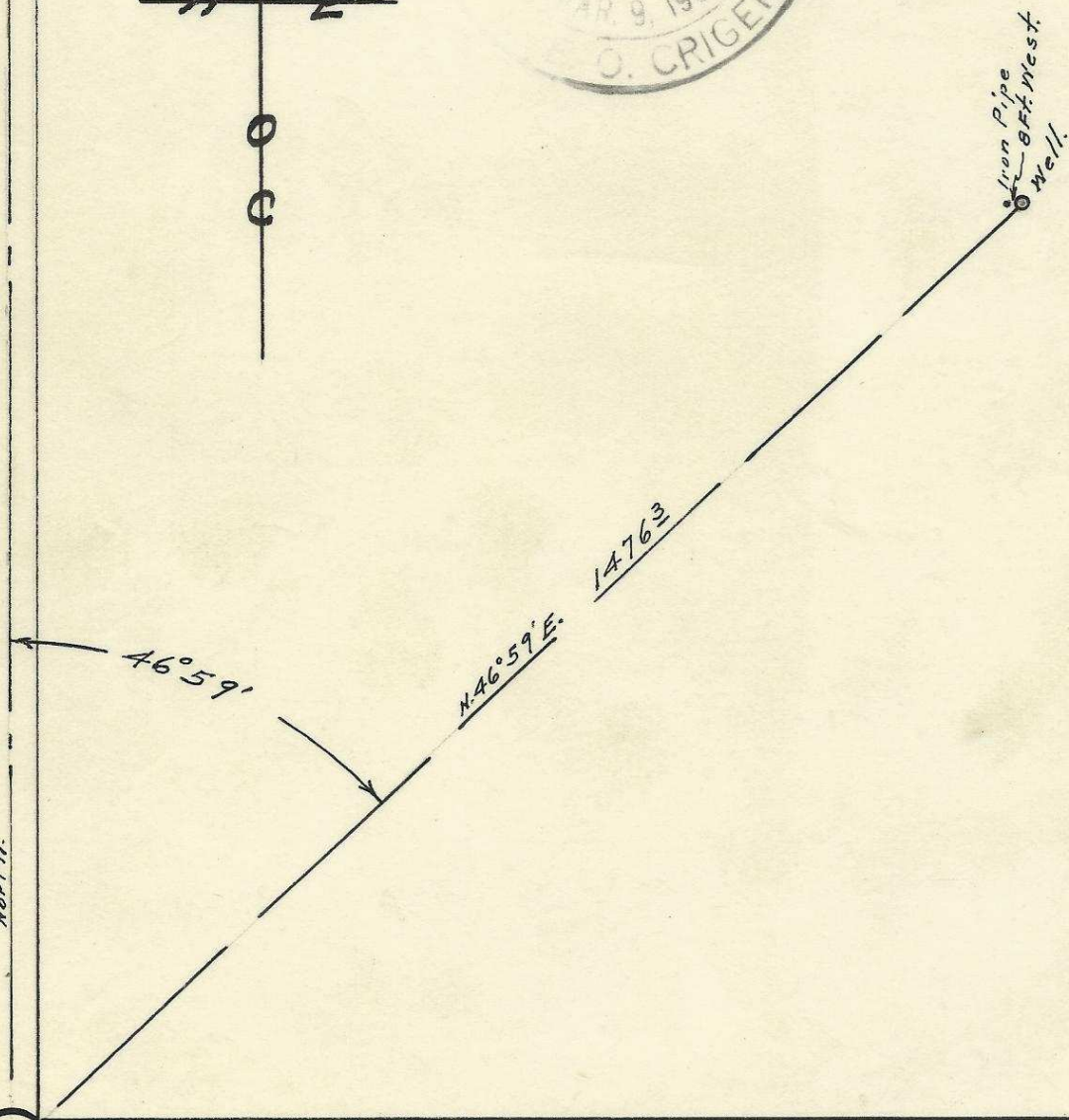
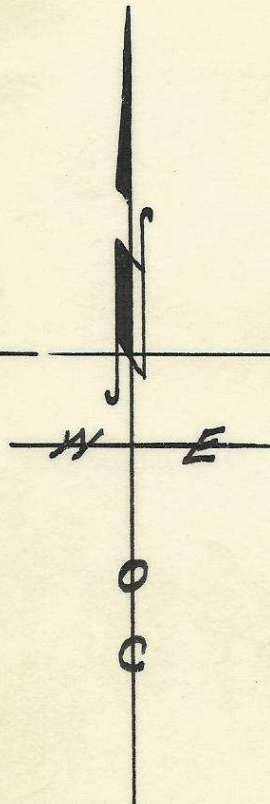
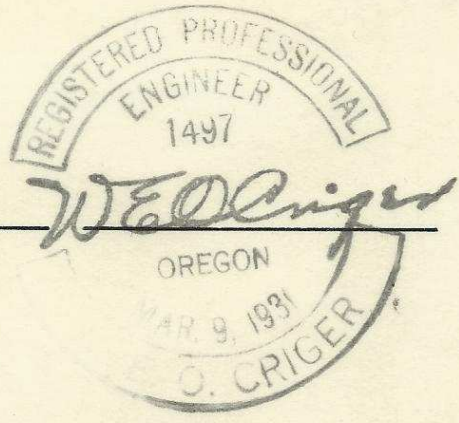


Map showing
 well location in S.W/4 of S.W/4 of
 Sec. 33, T. 2 N., R. 33 E. W. M.
 Motanic Ranch.
 Surveyed, staked and platted
 April - 1952 - By W. E. O. Criger.
 By direction of F. B. Hayes.
 Scale: 1 inch = 200 Feet.



32, 33
 5, 4

T. 2 N.
 T. 1 N.

06-73-Ax