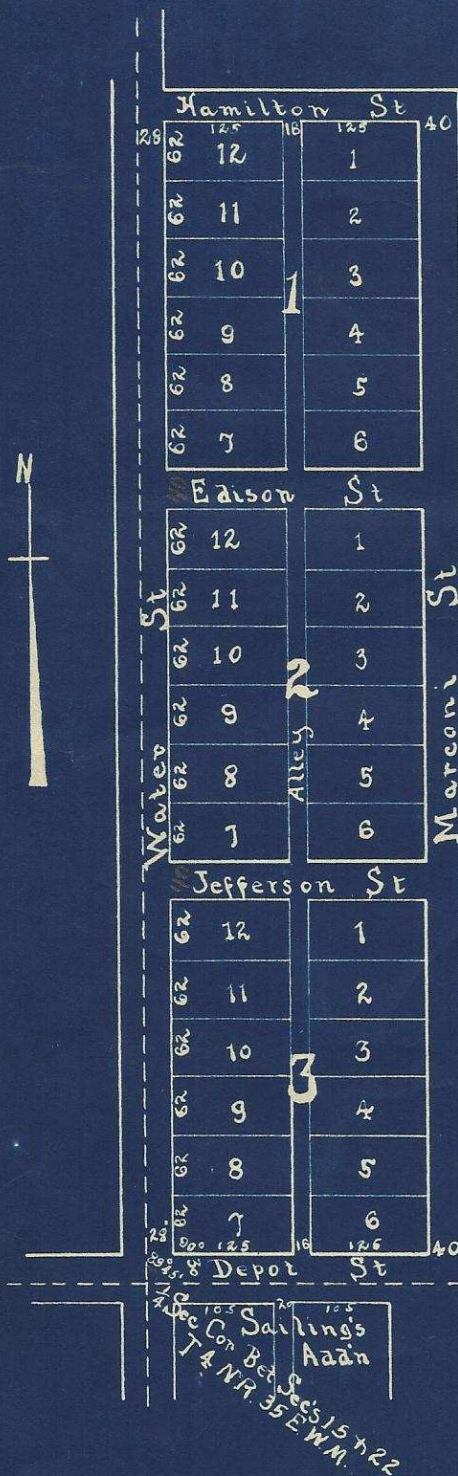


MAP OF GISH'S ADDITION to the City of WESTON, OR.

Scale, 1 in = 200 ft.



Know all men by these presents; That I, John D Gish do hereby set apart and forever dedicate to the public use all the Streets alleys marked and designated as such in the annexed map of Gish's Addition to the City of Weston in the County of Umatilla and State of Oregon.

Witness my hand and seal, this the 4th day of April 1903.

John D Gish. Seal

Filed April 8th 1903.



Hartman Abstract Company.
Pendleton, Oregon.