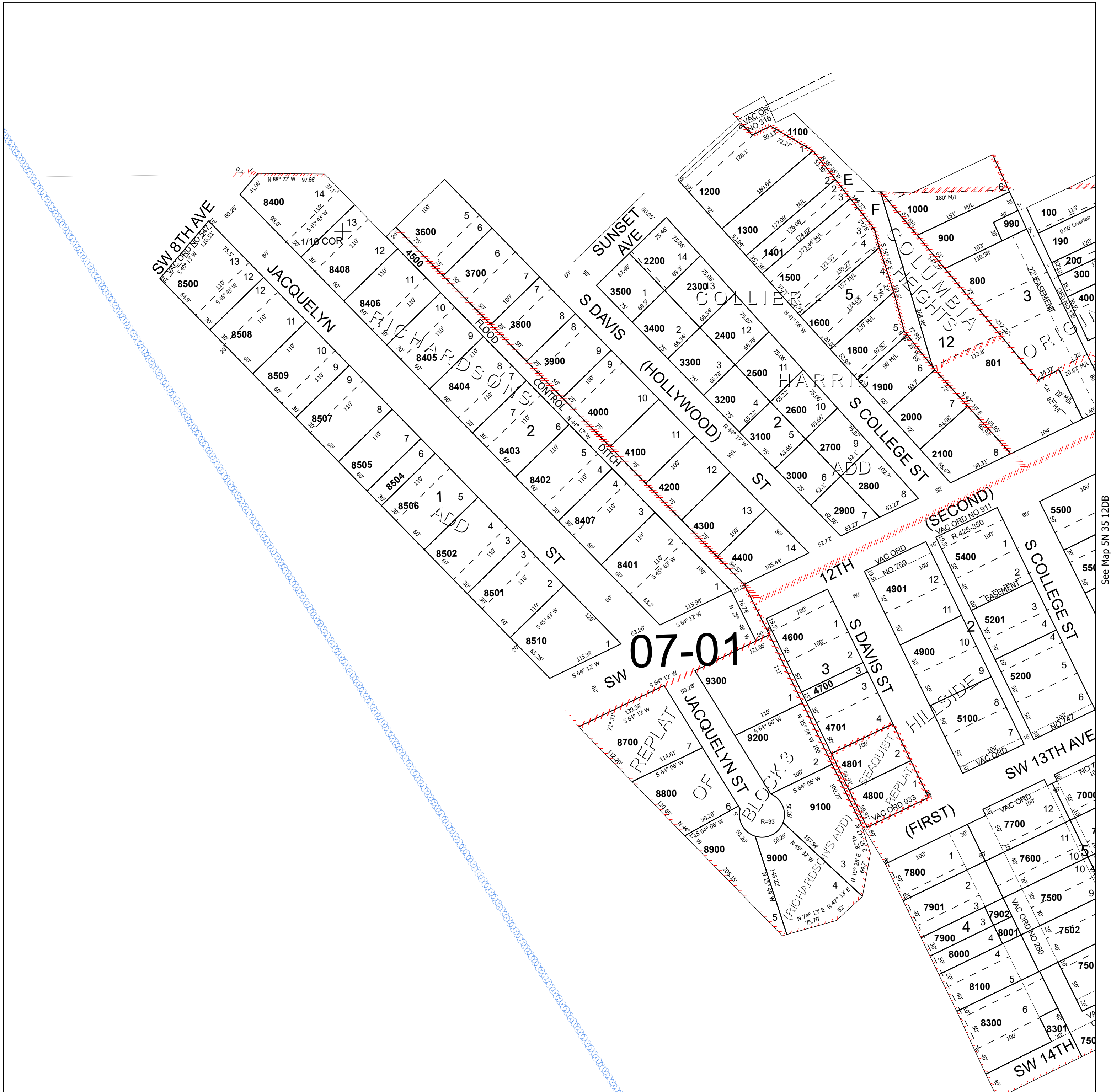


This map was prepared for Assessment & Taxation purposes only and was NOT prepared nor is it suitable for legal, engineering or surveying purposes.

700
1400
1700
5000
5300
7503
8200
8503
8600

SHEET NO.1 5N 35 12CA



See Map 5N 35 12

see Map 33 NC 33

This map was prepared for Assessment & Taxation purposes only and was NOT prepared nor is it suitable for legal, engineering or surveying purposes.

Cancelled Tax Lots

700
1400
1700
5000
5300
7503
8200
8503
8600

SHEET NO.2
NE 1/4 SW 1/4 SEC 12 T5N R35E WM
UMATILLA COUNTY
SCALE 1" =100'

Milton-Freewater

See Map 5N 35 12BD

SHEET NO.2 5N 35 12CA



Revised 5/27/2025

See Map 5N 35 12

SHEET NO.2 5N 35 12CA